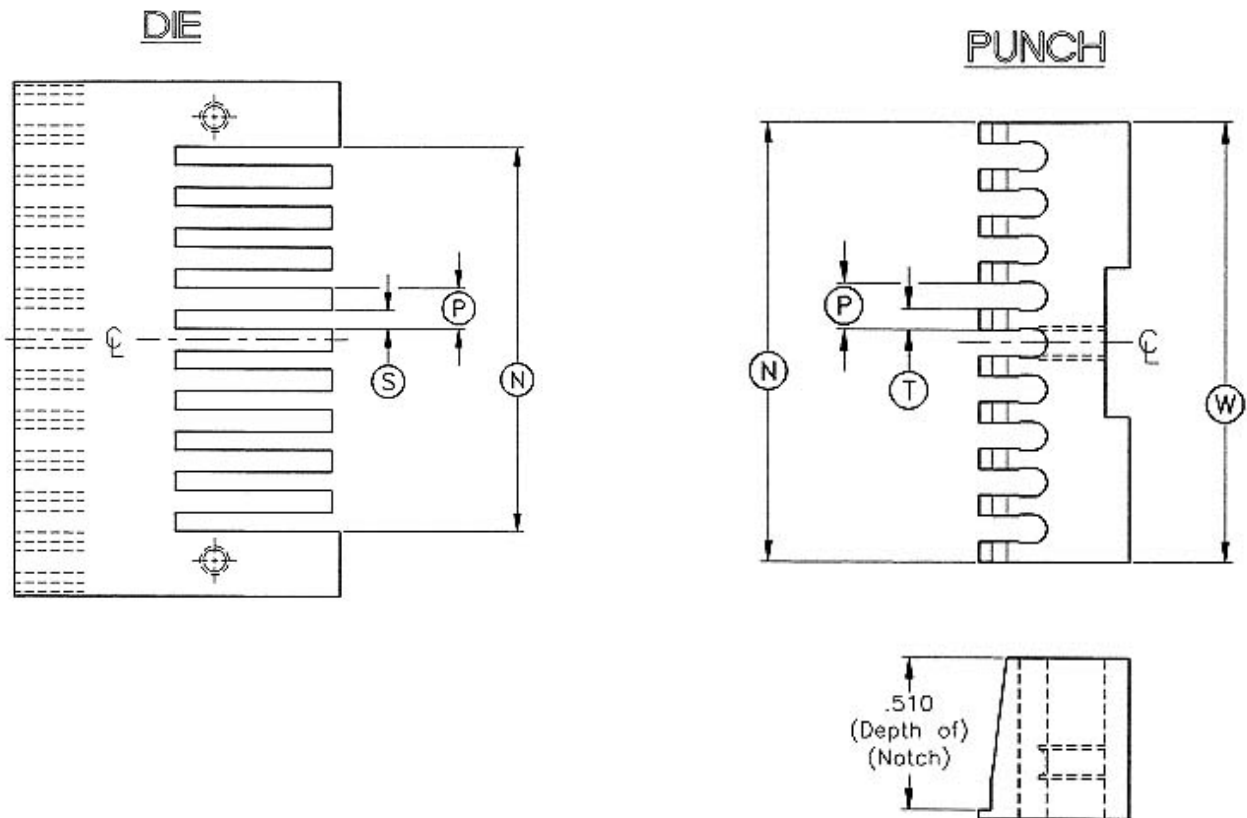


# Model 9200 Pneumatic Notcher

## Punch & Die Setup



PART NUMBER	CABLE SIZE	PITCH (P)	TOOTH WIDTH (T)	SLOT WIDTH (S)	WIDTH OF PUNCH (W)	NUMBER OF TEETH & SLOTS (N)
9200-3-1C	0.100"	0.100"	0.048"	0.0485"	1.348"	14
9200-3-2A	0.156"	0.156"	0.070"	0.0705"	1.474"	10
9200-3-3A	2mm	0.0787"	0.030"	0.0305"	1.211"	16

**Note: 9200 series punch & die fit only the 9200 Notcher**